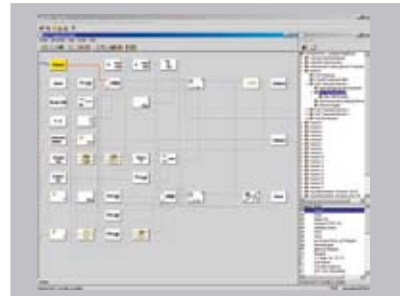
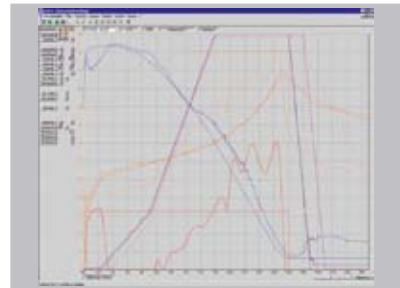
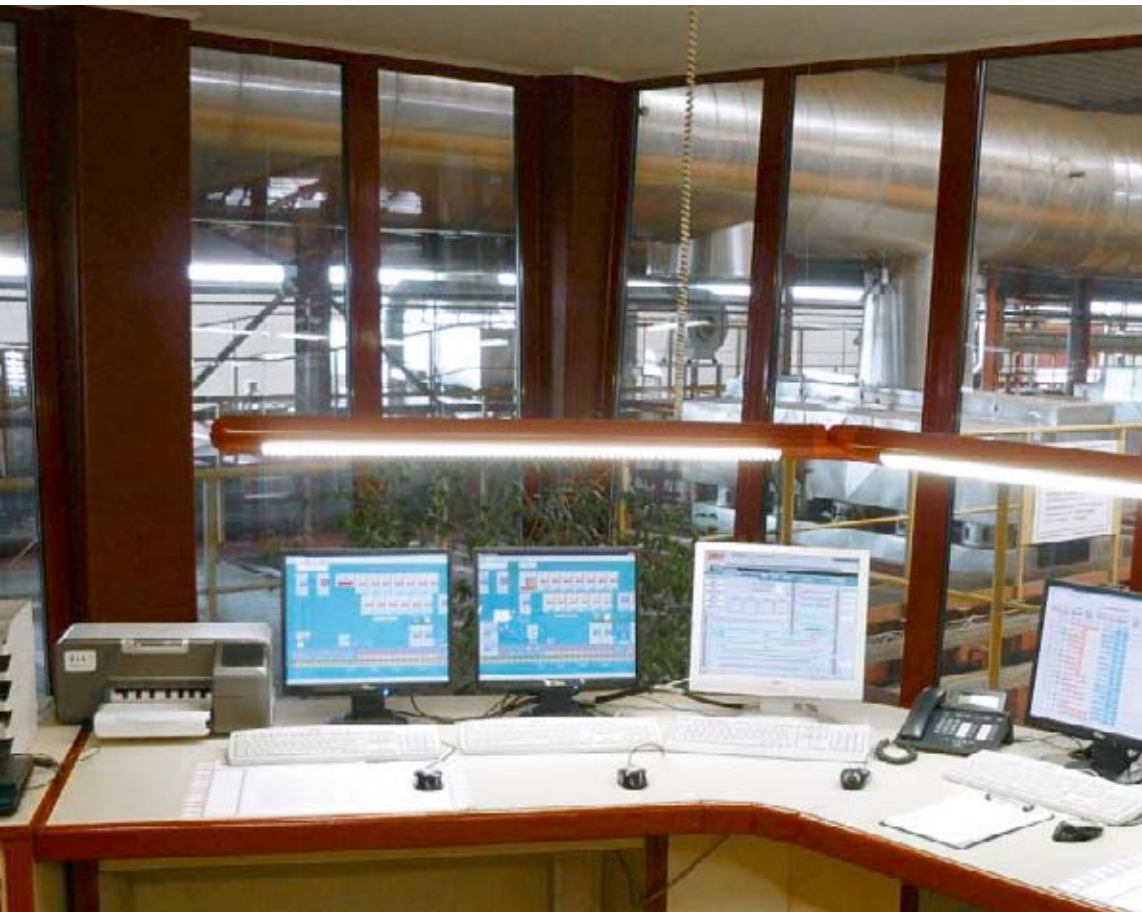


ROTHO AUTOMATION – SIMPLY FLEXIBLE

ROTHO Control



Intelligent process control

The intelligent process control systems of ROTHO optimize operations under changing operating conditions so that products with excellent quality can be produced constantly.

PRODUCT ADVANTAGES:

- Simple intuitive control of complex operations
- Process-oriented functioning
- Manifold control options

ROTHO control cabinets:

- Utilization type Siemens Simatic PLC
- Automatic preparation of the S7 software without requiring any programming knowledge
- Control via operator panel (as an option pilot systems)

ROTHO process control:

- Open user-defined configurable and parameterizable process system
- Definition of access authorizations
- Documentation of control operations, messages and alerts
- Graphic editor for product- and chamber-related drying programs
- Simple manipulation of running drying programs
- Graphic plant visualization
- Simple implementation of control strategies via module system
- User-defined temporal representation of all detected measurement and actuating variables
- Language selection

Powered by

innovatherm
Prof. Dr. Leisenberg GmbH+Co.KG

